



TROWEL APPLIED CONCRETE MICROTOPPING

Our trowel applied microtopping flooring is a great solution for those who want to achieve the look of a new concrete floor but don't have the depth required to pour a traditional concrete topping slab or self-leveling overlay. Because microtopping material requires minimal height (1/16"–1/8"), it can be applied almost anywhere, making it a popular choice for urban, residential, and commercial spaces.

PRODUCT INFORMATION

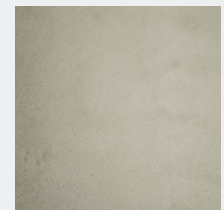
- Standard and custom colors/sheen
- Durable and low maintenance
- Thin buildup
- Ideal for resurfacing existing concrete
- Consistent appearance
- Highly engineered + crack resistant
- For commercial and residential use
- Qualifies for LEED v4.1

STANDARD PRODUCT DATA

| | |
|-------------|--|
| CSI SECTION | 03 35 44 |
| STRENGTH | 4,200 psi |
| THICKNESS | 1/16" - 1/8" typical |
| WEIGHT | Minimal |
| JOINTS | Dependent on existing conditions |
| SLIP | Exceeds DCOF requirements |
| SUBSTRATE | Structurally sound concrete or self-leveling |

STANDARD FINISH OPTIONS

Troweled



MANUFACTURING + OFFICE

121 Washington Street
Poughkeepsie, NY 12601
845.452.3988 / 212.414.1620

GRS

Get Real Surfaces is a certified Women-Owned Business (WBE)

GETREALSURFACES.COM