

AGGLOTECH[®]

ARCHITECTURAL TERRAZZO

PROJECTS **AND** COLOURS
2021



AGGLOTECH progetta e realizza il suo terrazzo in Italia presso gli stabilimenti di Verona seguendo un attento e scrupoloso protocollo ecosostenibile che prevede il recupero e la trasformazione in graniglie degli sfridi di lavorazione dell'industria lapidea.

Le graniglie e le polveri così ottenute vengono miscelate con acqua e cemento Portland 52,5 senza alcuna aggiunta di resine o polimeri. Il Terrazzo Agglotech è quindi un materiale da rivestimento ecocompatibile e ideale per il Green Building, a bassissime emissioni di sostanze organiche volatili e totalmente riciclabile come inerte a fine vita.

AGGLOTECH designs and produces terrazzo at our production facility in Verona, Italy. Our rigorous, environmentally friendly processes feature the transformation of marble aggregate recovered from marble manufacturers. The marble aggregate and powders are then mixed with water and 52.5 Portland cement without the need for added resins or polymers. As a result, Agglotech terrazzo is an environmentally sustainable cladding material that is ideal for use in green construction. It emits extremely low levels of volatile organic compounds and is fully recyclable as an inert substance at the end of its useful life.

AGGLOTECH entwickelt und realisiert seinen Terrazzo in Italien in seinem Werk in Verona und befolgt hierfür ein sorgfältiges und striktes Protokoll, das auf Umweltverträglichkeit ausgelegt ist und die Verwertung und Verarbeitung der Produktionsabfälle der Steinindustrie in Splitt beinhaltet. Der Splitt und der Staub, die so gewonnen werden, werden mit Wasser und Portlandzement 52,5 ohne Zugabe von Kunstharzen oder Polymeren vermischt. Agglotech-Terrazzo ist somit ein umweltverträgliches Beschichtungsmaterial, das sich ausgezeichnet für ökologisches Bauen eignet, einen winzigen Anteil an flüchtigen organischen Stoffen besitzt und am Ende seines Lebenszyklus als Inertstoff vollständig recycelt werden kann.

LIGHTWELL

TAIPEI, TAIWAN

material
SB 143 Bianco Carrara 25
SB 240 Torcello
SB 250 Lido

distributor
Stoneage





SVB OFFICE

TEL AVIV, ISRAEL

material
SB 240 Torcello

distributor
Parqueteam

PRIVATE HOUSE

LITHUANIA

material

SB 250 Lido

SB 124 Grigio Rotondo

distributor

Lapukas Ir Pieštukas





TIMES SQUARE

SHANGHAI, CHINA

material
SB 240 Torcello
SB 1000 Thassos
REG 3825 Custom colour

distributor
Ideal Source

PRIVATE HOUSE

SYDNEY, AUSTRALIA

material

SB 240 Torcello

distributor

Worldstone Solutions

architect

MHNDU

interior designer

THE UNLISTED COLLECTIVE

builder

HSN Property Group

photographer

Justin Alexander





MARIENTURM

FRANKFURT, GERMANY

material
SB 130 Aggloceppo

architect
Patricia Urquiola

photographer
Manolo Yllera

POST BUILDING

LONDON, UNITED KINGDOM



material

REG 3534 Custom colour

REG 3535 Custom colour





PRIVATE HOUSE

LONDON, UNITED KINGDOM

material
SB 220 Giudecca

distributor
InOpera Group

TOKIWABASHI TOWER

TOKYO, JAPAN

material

SB 143 Bianco Carrara 25

SB 240 Torcello

distributor

Sekigahara





material
REG 1712 Custom colour

GIANNI CHIARINI SHOWROOM

MILAN, ITALY

material
REG 1535 Custom colour

architect
Mide Architects





KA DESIGN

SYDNEY, AUSTRALIA

material
SB 250 Lido

distributor
Worldstone Solutions

architect
KA Design Studio

photographer
Tom Furgeson

J. JAPANESE RESTAURANT

NAPLES, ITALY

material
SB 171 Nero Venato

architect
Fadd Architects





MYKONOS MEETS MIAMI

SYDNEY, AUSTRALIA

material
SB 250 Lido

distributor
Worldstone Solutions

architect
Sheira Design

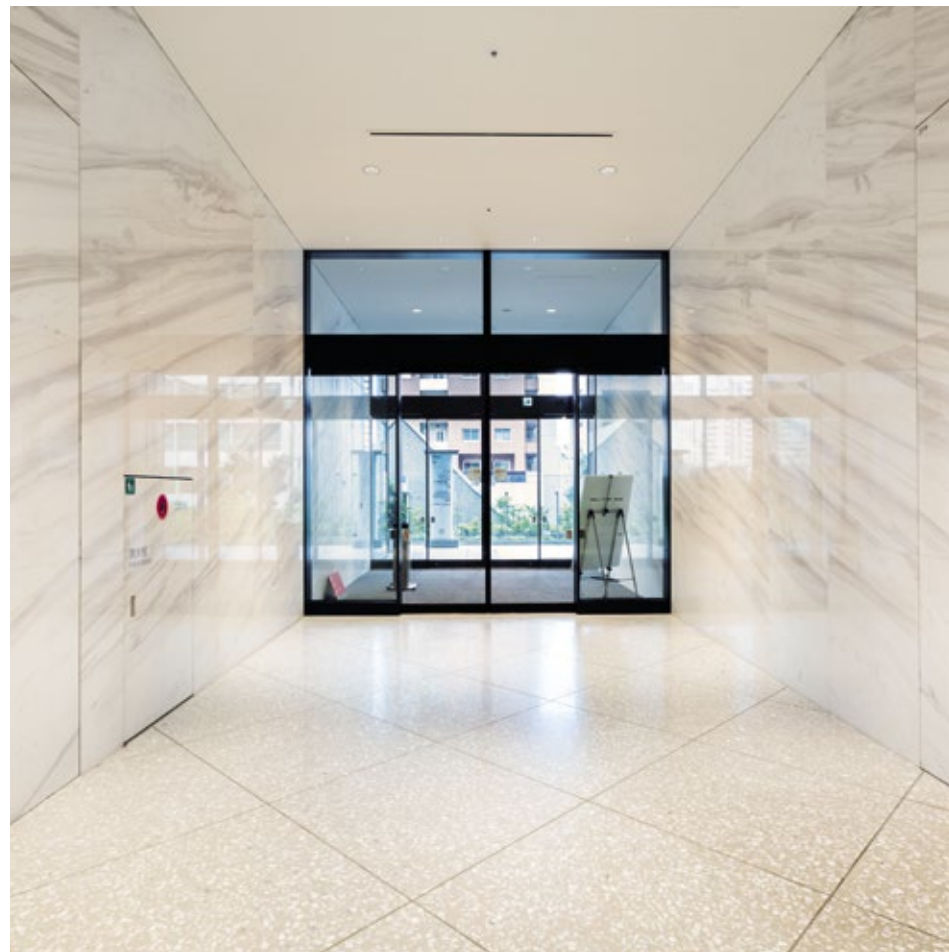
photographer
Simon Whitbread

TORANOMON BUSINESS TOWER

TOKYO, JAPAN

material
REG 3509 Custom colour

distributor
Sekigahara





NEW BUND CENTER

SHANGHAI, CHINA

material
SB 100 Bianco

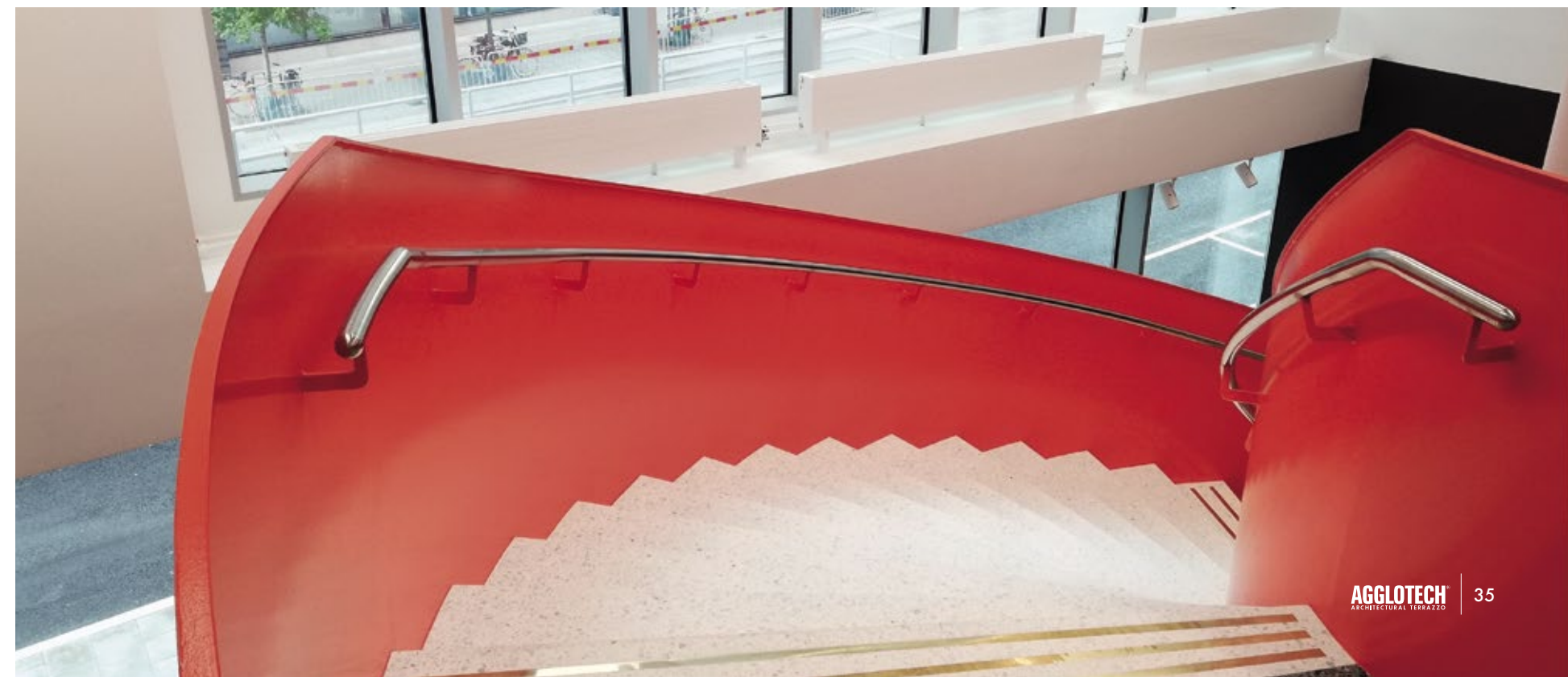
distributor
Ideal Source

ST ERIK EYE HOSPITAL

STOCKHOLM, SWEDEN

material
SB 143 Bianco Carrara 25

distributor
Svenk Terrazzo-Teknik





SPOTIFY OFFICE

STOCKHOLM, SWEDEN

material
REG 1718 Custom colour

distributor
Svenk Terrazzo-Teknik

SIGNORVINO

MILANO, ITALY

material
REG 4850 Custom colour





RESIDENZA VIA VITTORIO EMANUELE II

BERGAMO, ITALY

material
SB 100 Bianco

distributor
Trapattoni Marmi

NEXXUS OFFICE

SHANGHAI, CHINA

material
SB 210 Murano

distributor
Ideal Source





IMMANUEL-KANT STRASSE

BAD URACH, GERMANY

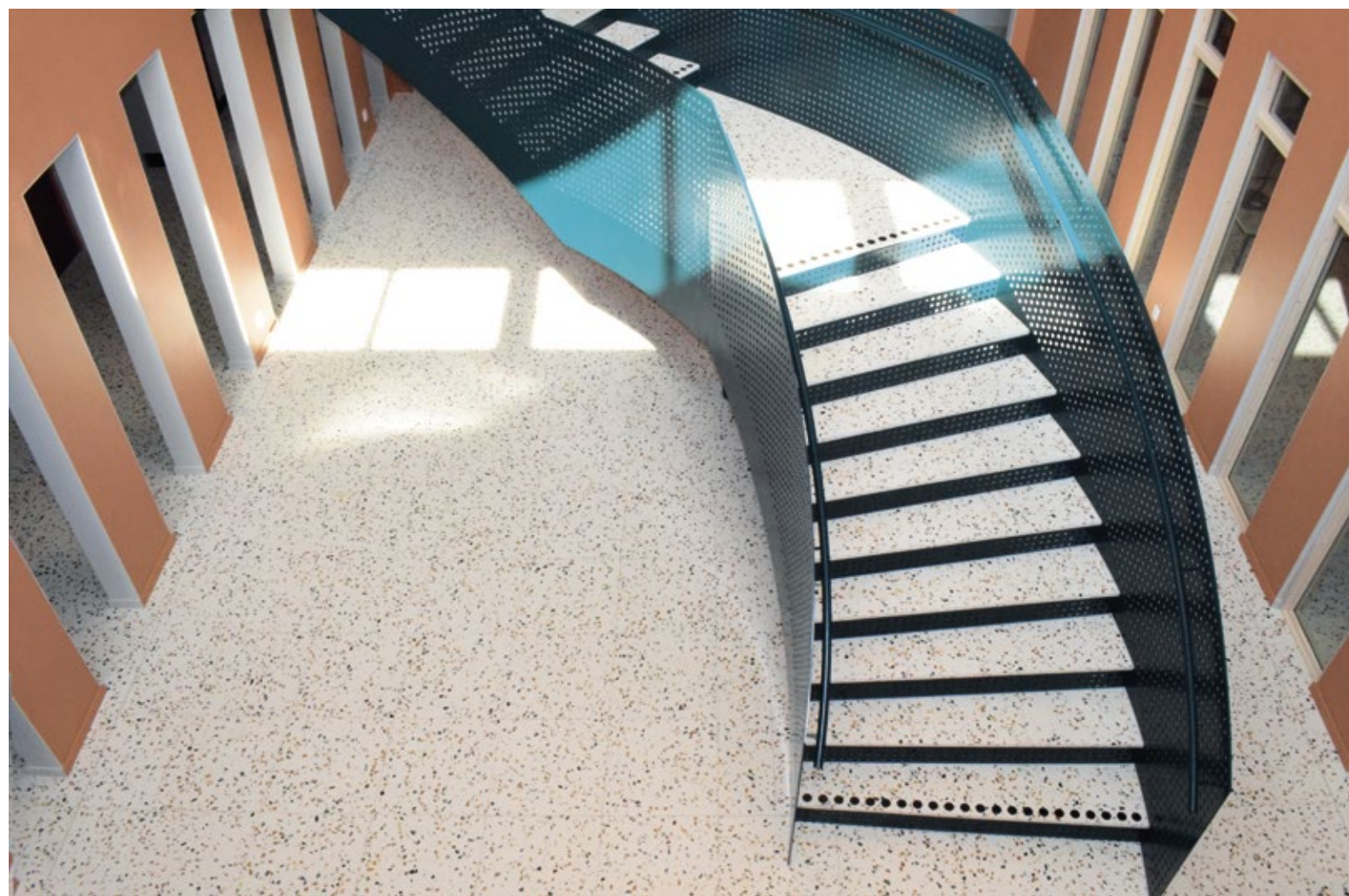
material
SB 130 Aggloceppo



**VIKTOR
RYDBERGS
SKOLOR**
FISKSÄTRA, SWEDEN



material
SB 210 Murano





DB BRICK

FRANKFURT, GERMANY

material
SB 171 Nero Venato

MIXCITY DACHONG

SHENZHEN, CHINA

material

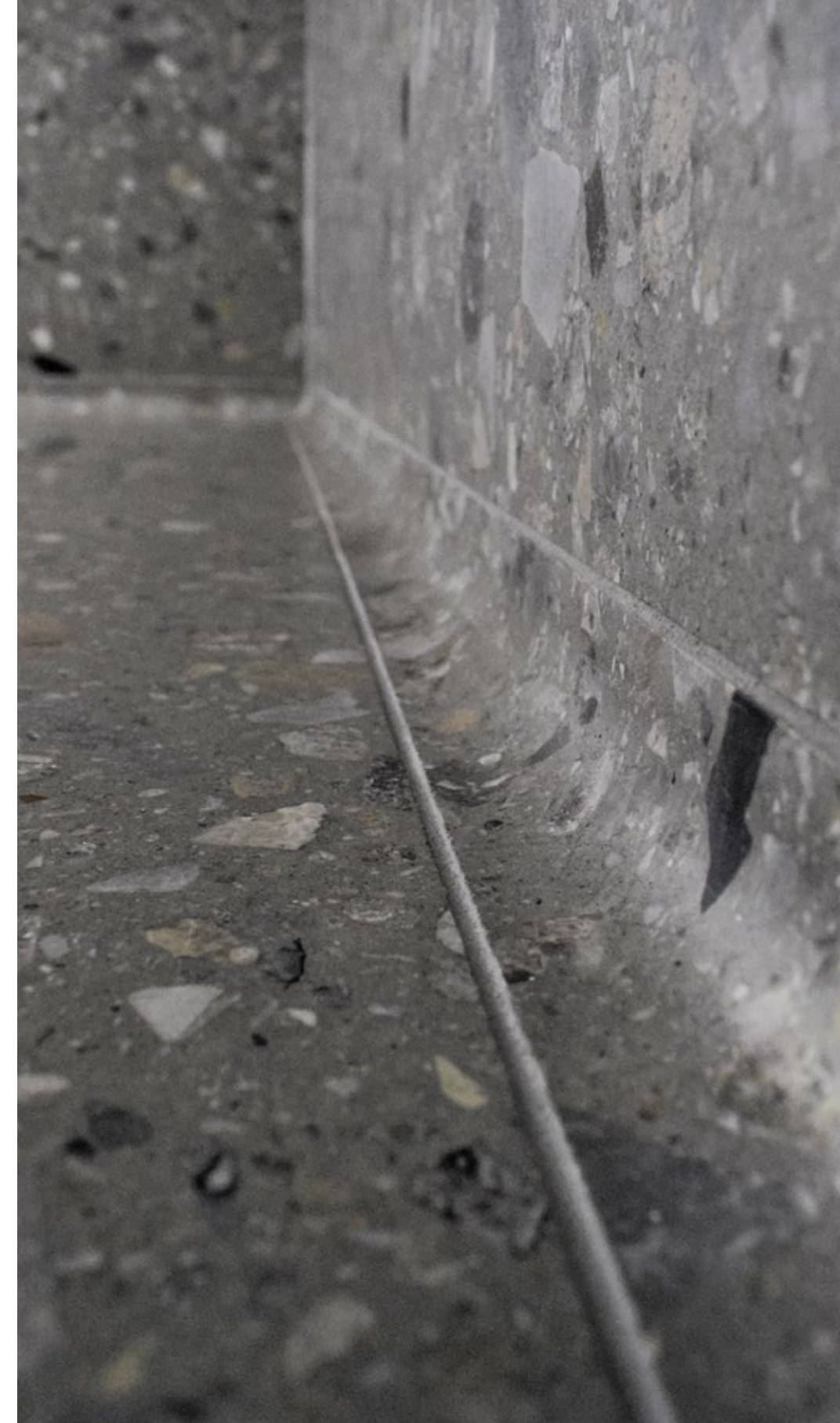
REG 2725 Custom colour

REG 2788 Custom colour

distributor

Ideal Source





VRAK – MUSEUM OF WRECKS

STOCKHOLM, SWEDEN

material
SB 130 Aggloceppo

distributor
Svenk Terrazzo-Teknik

HOTEL DEI CAVALIERI

MILAN, ITALY



material
SB 130 Aggloceppo

distributor
Trapattoni Marmi





SIGNORVINO

BOLOGNA, ITALY

material
REG 2655 Custom colour

WA MUSEUM BOOLA BARDIP

PERTH, AUSTRALIA

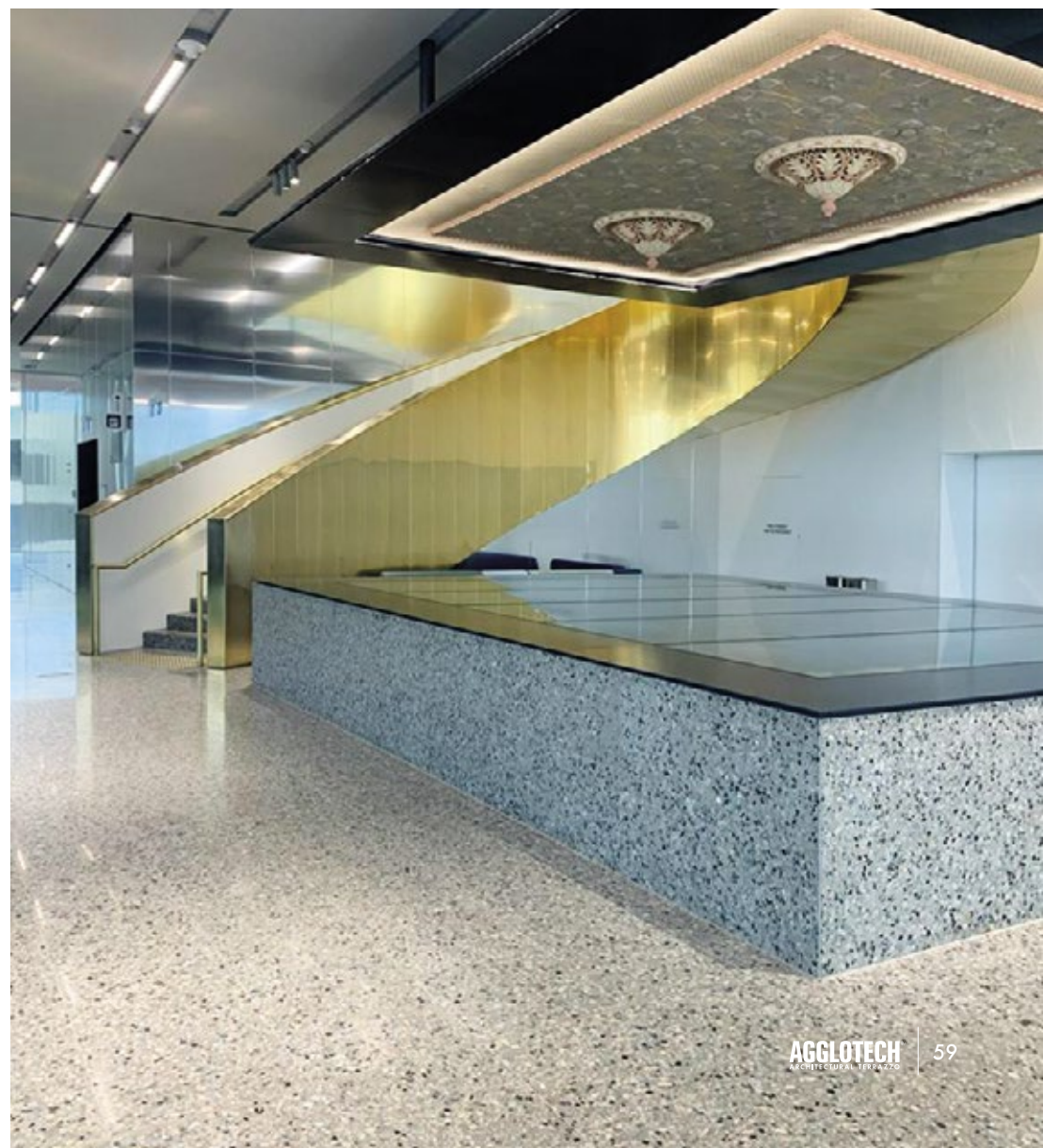
material

REG 3066 Custom colour

REG 3067 Custom colour

distributor

European Ceramics



LINEA UNICO CLASSICO



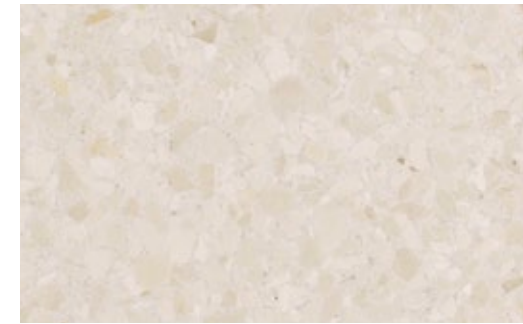
SB 100 Bianco



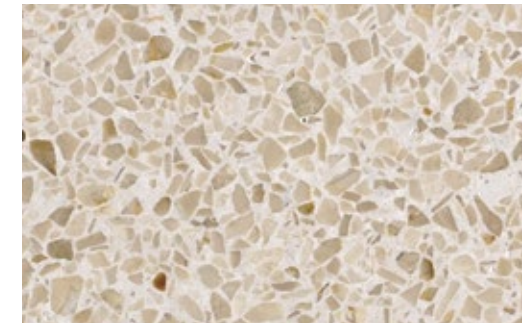
SB 178 Bianco Carrara 09



SB 143 Bianco Carrara 25



SB 136 Bianco Verona



SB 134 Crema



SB 500 Pietra Crema



SB 140 Cà D'oro



SB 173 Grigio Venato



SB 176 Botticino 09



SB 108 Beige



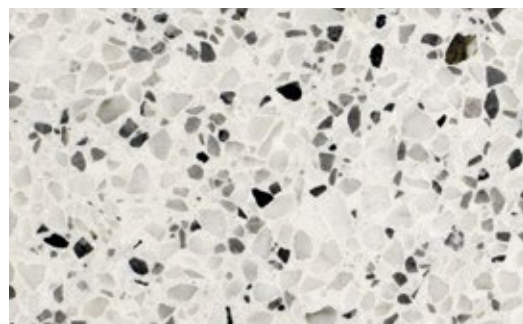
SB 135 Rosa



SB 102 Grigio Chiaro



SB 177 Botticino 25



SB 101 Pepe Sale



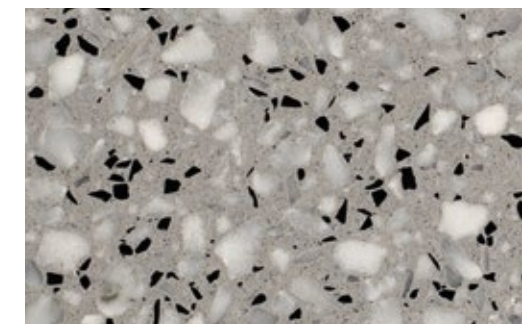
SB 170 Bianco Perla



SB 160 Grigio Carrara

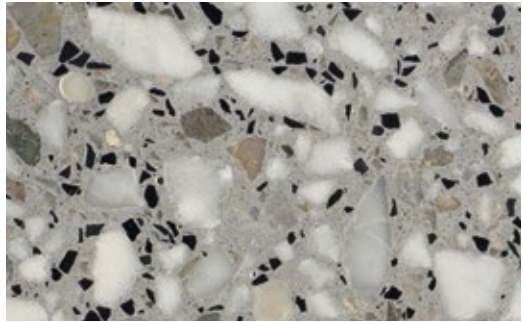


SB 103 Grigio Medio

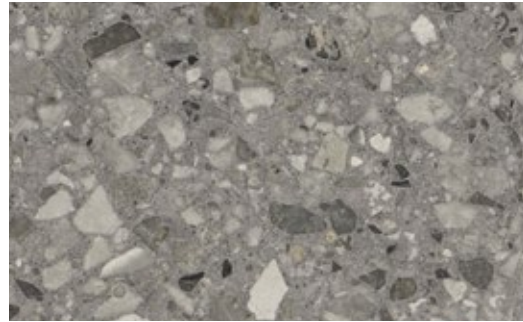


SB 119 Pepe Grigio

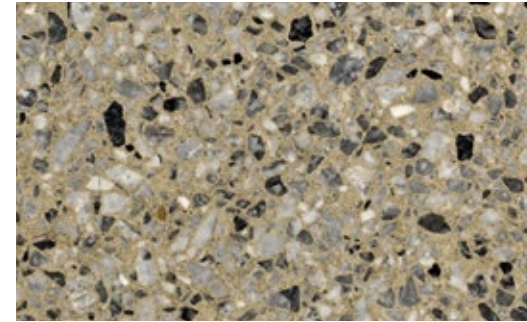
LINEA UNICO CLASSICO



SB 172 Grigio Perla



SB 104 Grigio Scuro



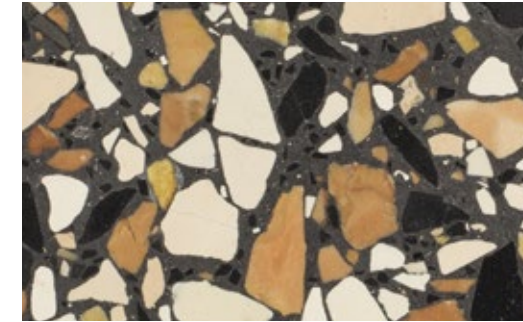
SB 107 Grigio Marron



SB 121 Multicolor Chiaro



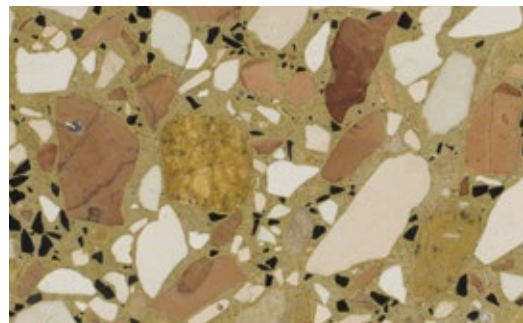
SB 125 Bruno Rotondo



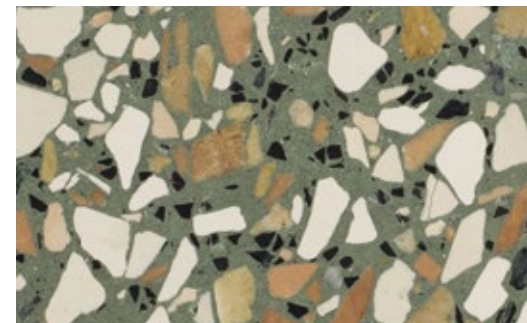
SB 114 Multicolor Grigio



SB 109 Giallo



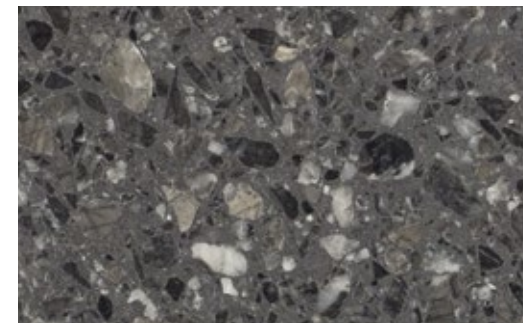
SB 141 Multicolor Verona



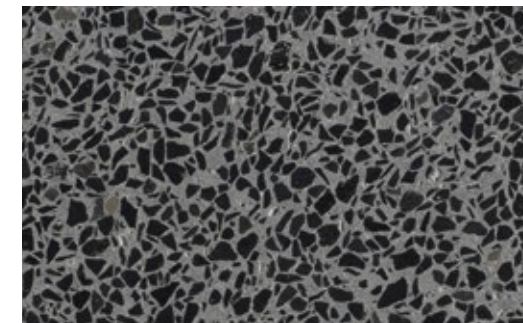
SB 115 Multicolor Verde



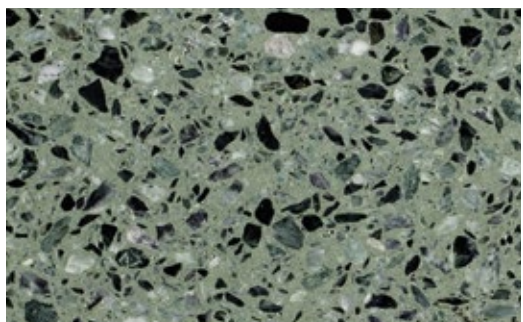
SB 113 Multicolor Nero



SB 105 Antracite



SB 128 Grigio Nero



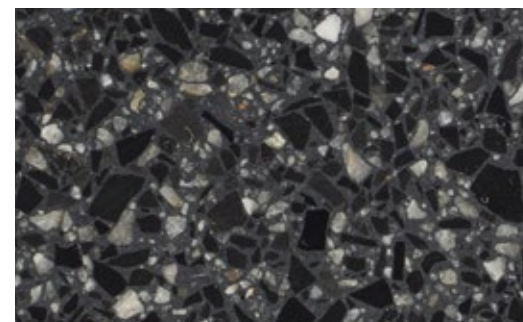
SB 111 Verde



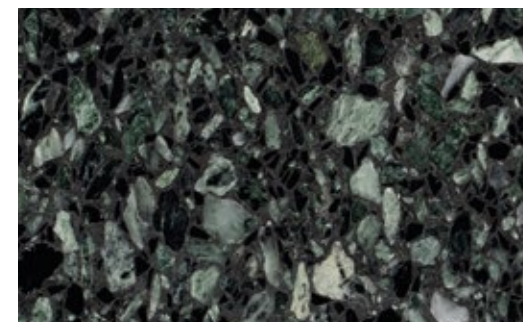
SB 174 Moncervetto



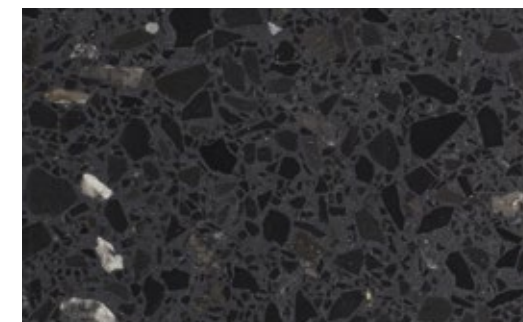
SB 124 Grigio Rotondo



SB 175 Nero Perla



SB 112 Verde Scuro

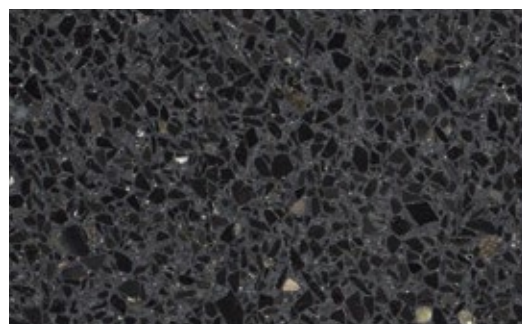


SB 171 Nero Venato

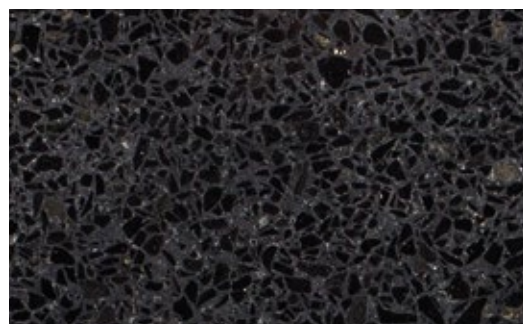
material

LINEA UNICO CLASSICO

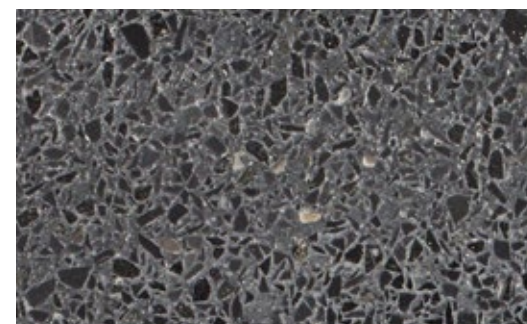
Finiture disponibili per tutti i materiali / Available finishing on all materials / Bearbeitung bei allen Colourien möglich



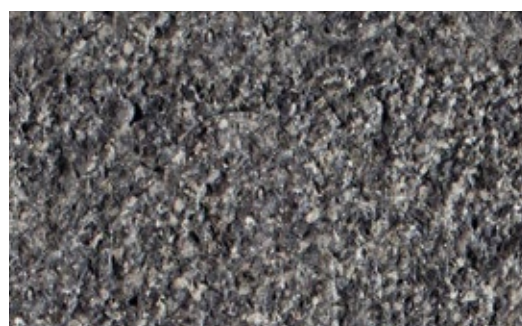
SB 106 Nero
levigato honed geschliffen



lucido polished poliert



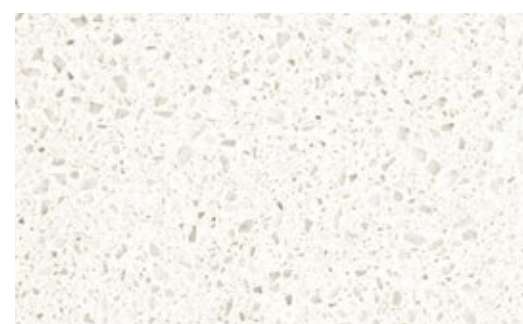
spazzolato brushed gebürstet



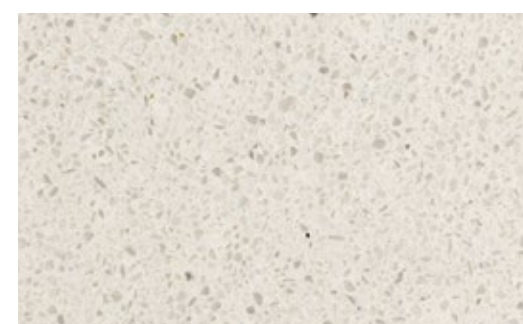
bocciardato bush-hammered gestockt

material

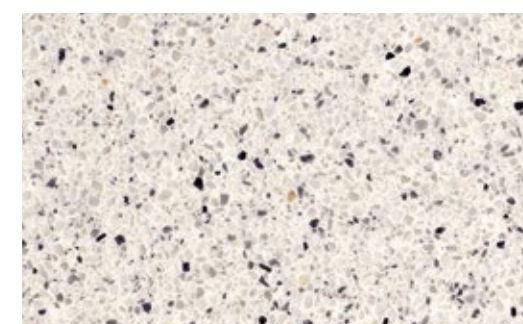
LINEA MICRO TERRAZZO



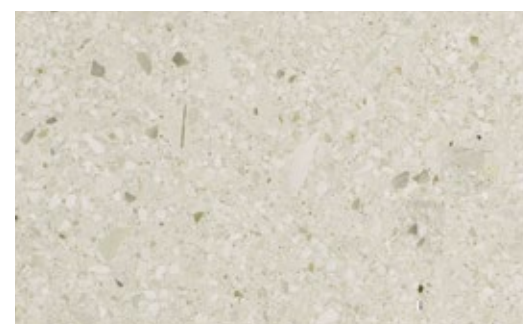
SB 1000 Thassos



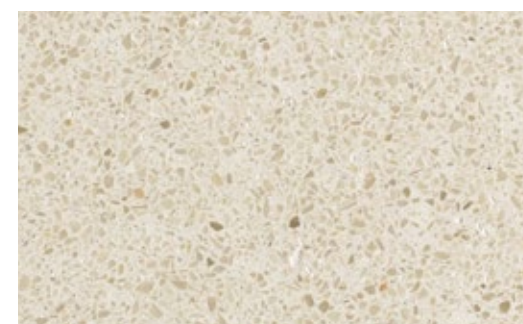
SB 138 Ghiaccio



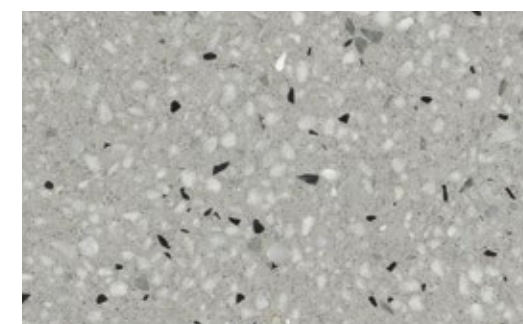
SB 150 Sale Pepe



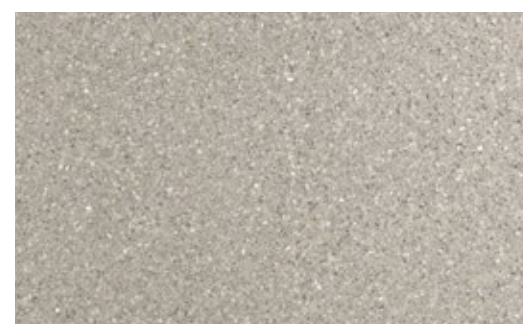
SB 159 Ricotta



SB 144 Avorio



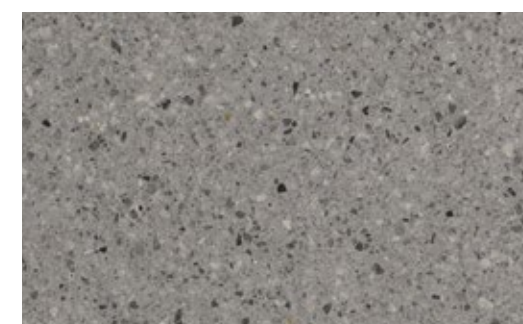
SB 129 Grigio Pepe



SB 139 Cenere

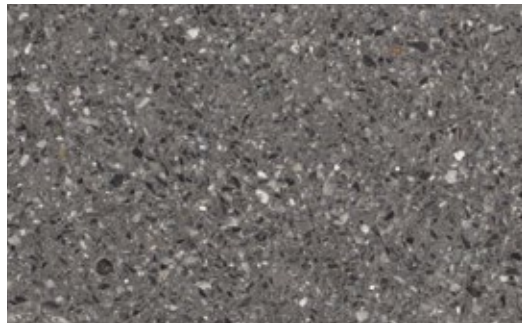


SB 149 Fumo



SB 151 Zinco

LINEA MICRO TERRAZZO



SB 148 Grafite



SB 158 Acquamarina



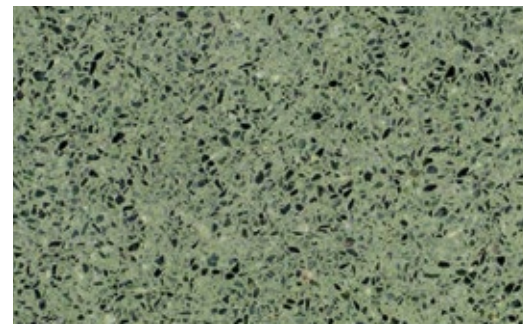
SB 137 Sabbia



SB 153 Ecrú



SB 154 Cappuccino



SB 157 Smeraldo

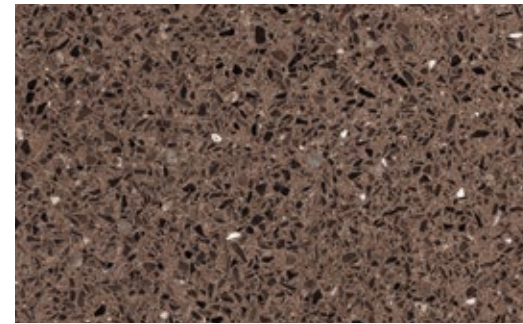


SB 156 Zafferano

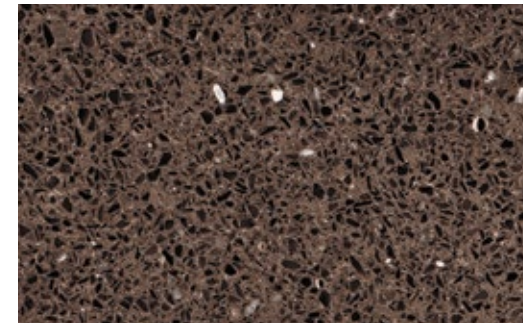


SB 155 Terracotta

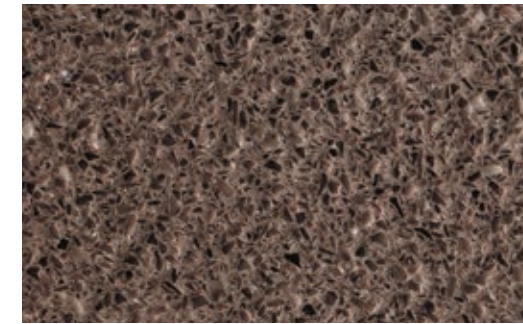
Finiture disponibili per tutti i materiali / Available finishing on all materials / Bearbeitung bei allen Colourien möglich



SB 147 Mogano
levigato honed geschliffen



lucido polished poliert



spazzolato brushed gebürstet



bocciardato bush-hammered gestockt

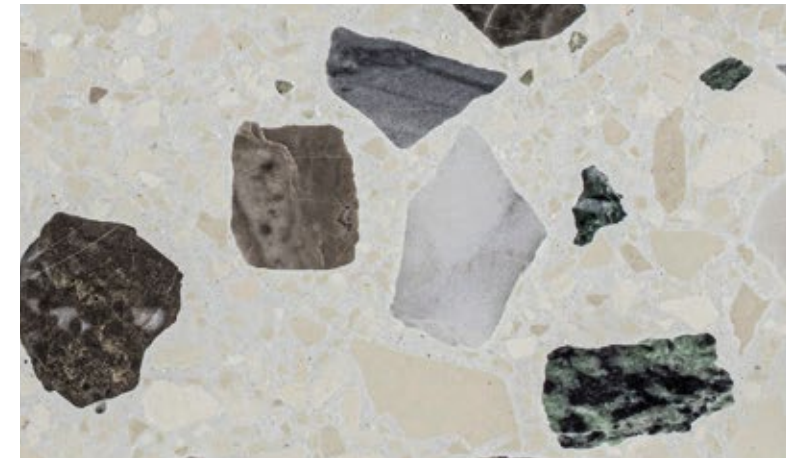
LINEA SEMINATO VENEZIANO



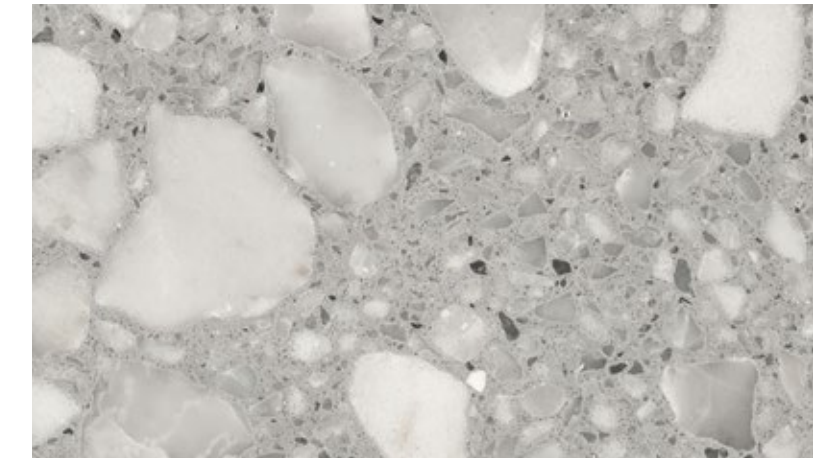
SB 250 Lido



SB 210 Murano



SB 280 Campalto



SB 240 Torcello



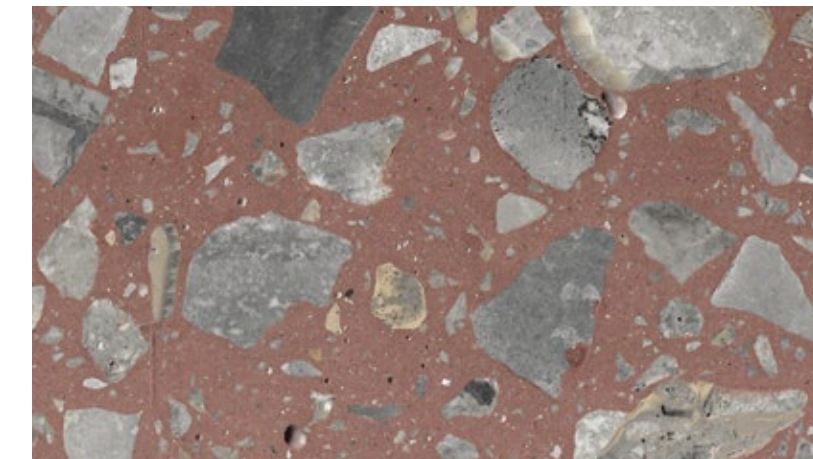
SB 230 Pellestrina



SB 290 Calacatta

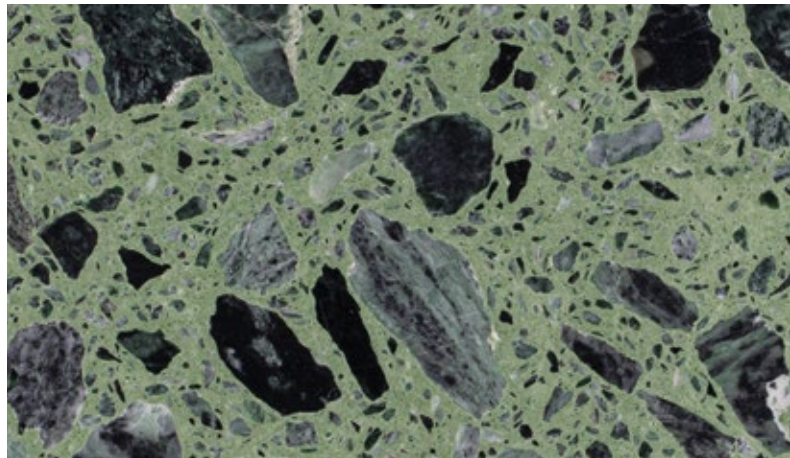


SB 220 Giudecca



SB 300 Chioggia

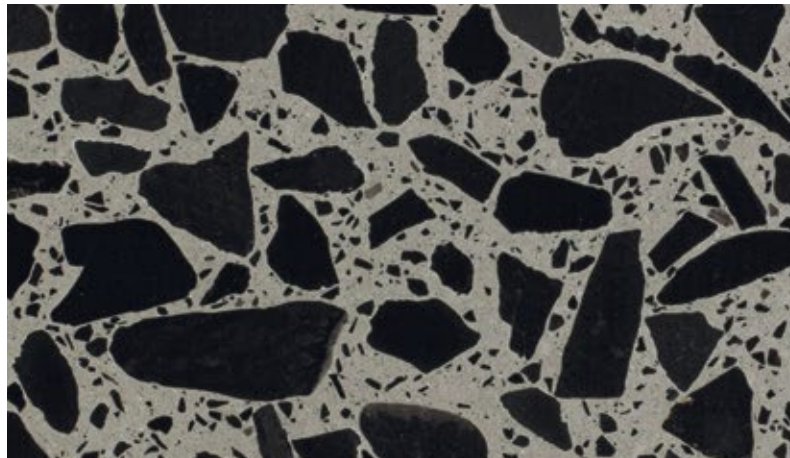
LINEA SEMINATO VENEZIANO



SB 270 Mazzorbo

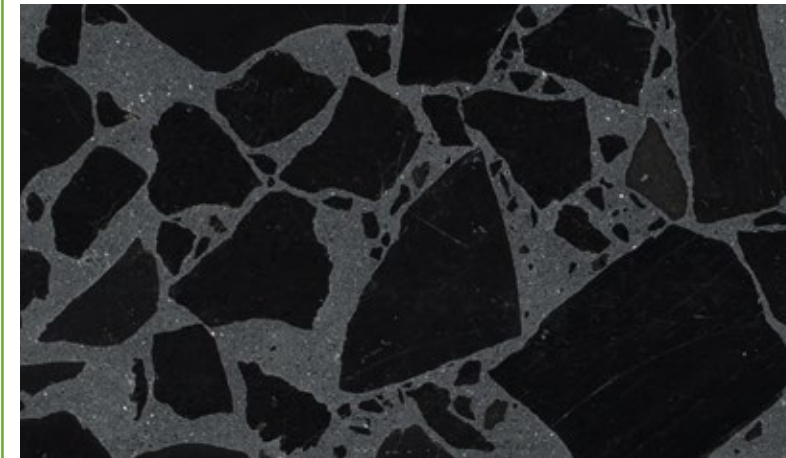


SB 130 Aggloceppo

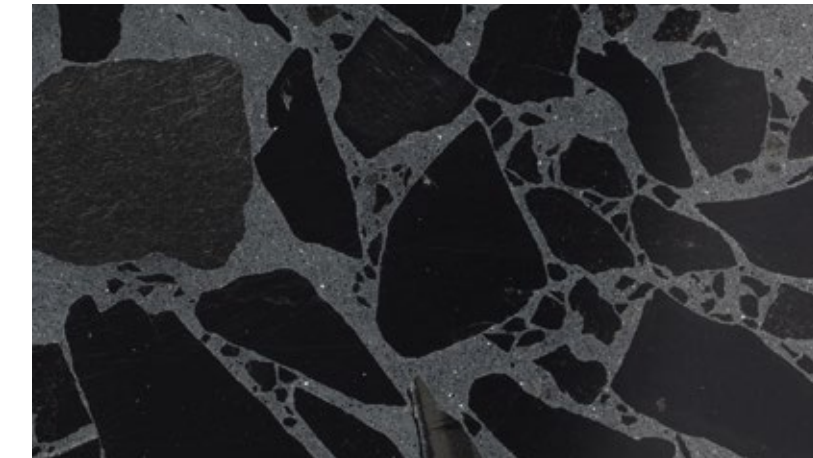


SB 260 Tronchetto

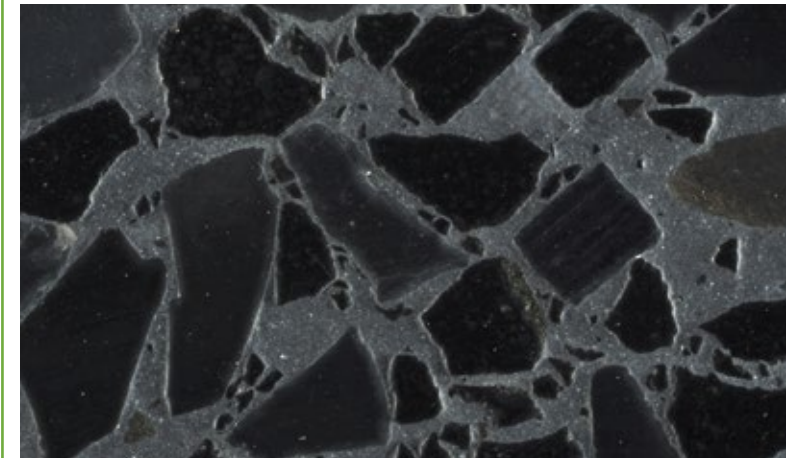
Finiture disponibili per tutti i materiali / Available finishing on all materials / Bearbeitung bei allen Colourien möglich



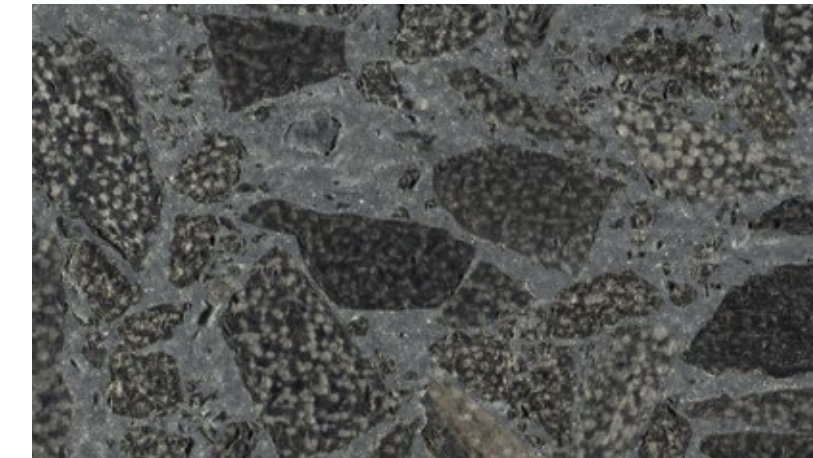
SB 200 Burano
levigato honed geschliffen



lucido polished poliert



spazzolato brushed gebürstet



bocciardato bush-hammered gestockt





AGGLOTECH, leader europeo nella produzione di terrazzo, promuove e diffonde l'utilizzo degli agglomerati di marmo a base di cemento come materiale da rivestimento versatile, naturale e con eccellenti caratteristiche tecniche. Il costante interesse per l'ecosostenibilità e l'investimento in nuovi impianti con maggiore capacità produttiva garantiscono alta qualità del prodotto e velocità nei tempi di consegna. Un team tecnico specializzato supporta i clienti dalla progettazione alla messa in opera del materiale; Agglotech è il partner ideale per grandi progetti!

A European leader in the production of terrazzo, AGGLOTECH promotes the use of marble-cement agglomerates as a versatile, natural cladding material that features excellent technical performance. Our constant focus on sustainability and investment in new, highcapacity production systems enable us to produce and deliver a high-quality product quickly. Our team of experts is here to assist you with the design and use of our products, making Agglotech the perfect partner for projects large and small!

AGGLOTECH ist europaweit führend bei der Terrazzoherstellung und fördert und verbreitet die Nutzung von Agglomeraten aus Marmor und Beton als vielseitiges, natürliches Material mit exzellenten technischen Eigenschaften für Boden- und Wandbeläge. Das kontinuierliche Interesse an Umweltverträglichkeit und die Investitionen in neue Anlagen mit erhöhter Produktionskapazität garantieren hohe Produktqualität und schnelle Lieferzeiten. Ein hoch spezialisiertes Team unterstützt die Kunden von der Planung bis zur Materialverlegung. Agglotech ist der optimale Partner für große Projekte!

Lo sviluppo tecnologico di AGGLOTECH sempre attento alle richieste di un mercato in forte evoluzione ha visto la recente introduzione di due nuovi impianti d'avanguardia al fine di aumentare la capacità produttiva e migliorare le performance tecniche dei materiali: il primo dedicato alla produzione di blocchi nello stabilimento di Grezzana e il secondo per la lucidatura e il trattamento lastre nella sede di Marzana. Crediamo che il progresso e la tecnologia si identifichino con la capacità di collegare il nostro presente a un futuro sostenibile, sfruttando correttamente e consapevolmente le risorse a nostra disposizione. Da anni Agglotech conferma e difende la sua scelta ecologica.

At AGGLOTECH, we are committed to developing technology to meet the needs of a rapidly evolving marketplace. This includes the recent addition of two cutting-edge systems to increase our production capacity and enhance the technical performance of our products. The first of these is dedicated to the production of terrazzo blocks at our Grezzana facility, while the other is used to polish and treat terrazzo slabs at our Marzana facility. We believe that technological progress comes out of our ability to look to our past in order to create a sustainable future by taking advantage of the resources available to us in a more conscious manner. Agglotech has continued to pursue this ecological strategy for many years.

Die technologische Entwicklung von Agglotech orientiert sich an den Erfordernissen des Marktes. Mit größter Aufmerksamkeit werden die ständig steigenden Anforderungen an Design, Qualität und Quantität von Terrazzo beobachtet und entsprechend reagiert. Erst kürzlich wurde in zwei neue Hightech-Anlagen investiert, um die Produktionskapazität zu erhöhen und die Material-Qualität zu verbessern. Die erste Anlage wurde im Blockwerk in Grezzana installiert und die zweite im Verarbeitungswerk in Marzana. Es sind technisch ausgereifte Systeme modernster Bauart, die eine effiziente und energiesparende Produktion ermöglichen. Wir sind überzeugt, dass uns Fortschritt und Technologie befähigen, die zur Verfügung stehenden Ressourcen korrekt und bewusst zu nutzen und so zu einer nachhaltigen Zukunft beizutragen. Seit Jahren werden im Hause Agglotech wichtige Entscheidungen ökologisch getroffen und praktiziert.

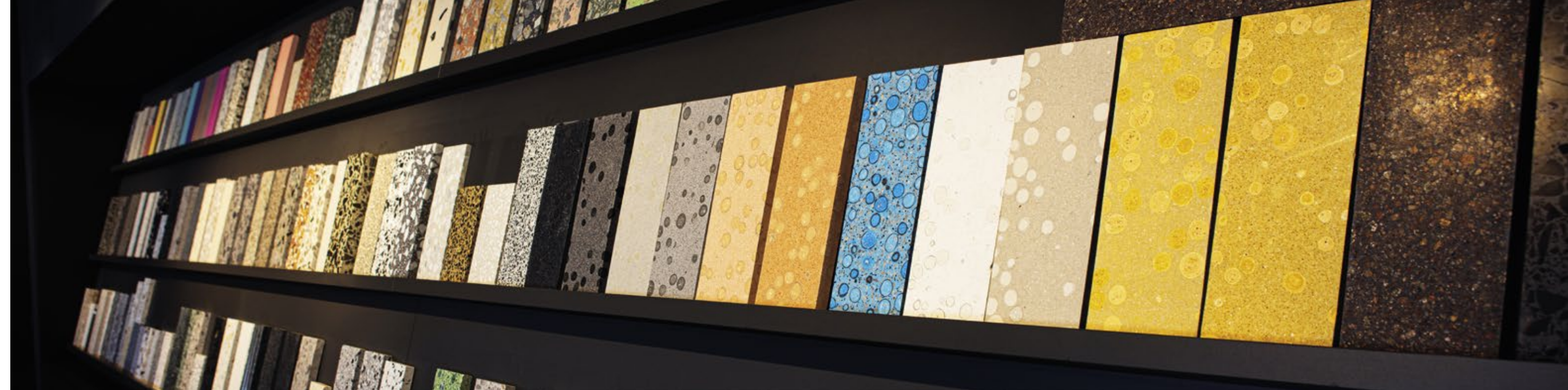




Il terrazzo di AGGLOTECH è una pietra ricomposta che ha salde radici nella tradizione ed è il risultato della perfetta miscela di soli elementi di origine naturale: graniglie di marmo, cemento Portland e acqua. L'intero processo produttivo e i materiali finiti sono controllati e certificati da ispezioni del laboratorio LGA di Norimberga, secondo la normativa EN 13748. LGA verifica il rispetto delle procedure di controllo della qualità e la corretta compilazione dei registri (con successiva archiviazione in azienda per i cinque anni a seguire). Da ogni lotto produttivo preleviamo dei campioni per testare in laboratorio la resistenza alla flessione e all'abrasione, l'assorbimento d'acqua e la resistenza al gelo. I controlli proseguono anche sui lavorati finiti, con misurazioni a campione per verificare la precisione dei tagli. I prodotti Agglotech soddisfano tutti gli standard normativi e ambientali vigenti.

Agglotech terrazzo is a recomposed stone that is deeply rooted in tradition and is the result of a perfect combination of all-natural ingredients: marble chips, Portland cement and water. Our finished materials and our entire production process are controlled and certified to meet the EN 13748 standard by way of periodic audits by LGA, based in Nuremberg. LGA verifies both our quality control processes and the proper maintenance of our production logs (which are kept on file for five years). We take samples from every batch of blocks produced in order to conduct tests in our in-house lab to ensure proper flex resistance, scratch resistance, water absorption, and freeze resistance. Quality control is also conducted on the finished product by way of sample measurements in order to ensure cut precision. Agglotech products comply with all applicable environmental and quality standards.

AGGLOTECH-Terrazzo ist ein traditionsreicher Kunststein und das Ergebnis einer vollendeten Mischung ausschließlich natürlicher Elemente: Marmorsplitt, Portlandzement und Wasser. Der gesamte Produktionsprozess und die fertigen Materialien werden durch Inspektionen des Prüfinstituts LGA in Nürnberg nach EN 13748 geprüft und zertifiziert. LGA prüft die Einhaltung der Verfahren zur Qualitätskontrolle und die korrekte Erstellung der Prüfprotokolle (die anschließend für die nächsten fünf Jahre im Unternehmen archiviert werden). Jeder Partie entnehmen wir Proben, deren Biege- und Abriebfestigkeit, Wasseraufnahmefähigkeit und Frostbeständigkeit im Labor getestet werden. Die Kontrollen erstrecken sich auch auf die Fertigprodukte durch Prüfung der Maßhaltigkeit und Schnittpräzision. Agglotech-Produkte erfüllen alle geltenden Rechts- und Umweltvorschriften.




















INFORMAZIONI TECNICHE E DI PRODOTTO

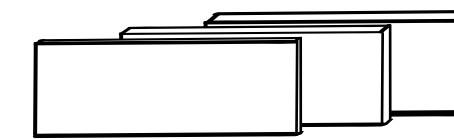
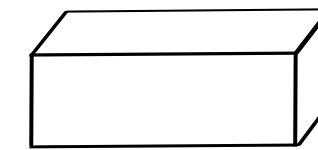
TECHNICAL AND PRODUCT INFORMATION

TECHNISCHE UND PRODUKTBEZOGENE INFORMATIONEN

-  Monostrato precast block massiv
-  Ecologico natural product ökologisch
-  Alta resistenza highly resistant sehr resistant
-  Uniforme uniform homogen
-  Facile da installare simple to install einfache verlegung
-  Facile da mantenere easy to maintain pflegeleicht

CARATTERISTICHE TECNICHE / TECHNICAL DATA / TECHNISCHE DATEN	NORMA / NORM EN13748-1	TESTATO LGA LGA TESTED / LGA GETESTET
 Resistenza all'abrasione Resistance to Abrasion / Schleifverschleiss	< 30 cm ³ /50 cm ³	Ø < 20 cm ³ / 50 cm ³
 Assorbimento d'acqua Water Absorption / Wasseraufnahme	M-% < 8	M-% < 5
 Resistenza alla flessione Flexural Strength / Biegezugfestigkeit	N/mm ² > 5	N/mm ² > 8
 Resistenza alla compressione Resistance to Compression / Druckfestigkeit	N/mm ² > 30	N/mm ² > 70
 Carico di rottura Breaking load / Bruchlast	KN > 2,5	KN > 3,0
 Peso specifico Density / Trockenrohddichte	-	2,40 g/cm ³
 Resistenza allo scivolamento Slippage Resistance / Rutschwiderstand	> 6° (R9)	> 8°
 Resistenza al fuoco Fire Resistance / Brandverhalten	A1 _{fl}	A1 _{fl} non infiammabile fire resistant / nicht brennbar
 Resistenza al gelo Frost Resistance / Witterungs-Beständig	-	Klasse 2/B - 3/D

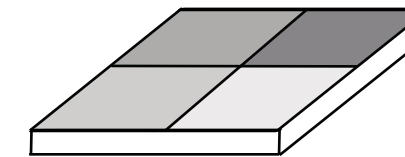
MISURE E PESI / SIZES AND WEIGHTS / MASSE UND GEWICHTE



blocchi blocks blöcke
253/142/80 cm 7,5 tons

lastre slabs rohplatten
253/142/2 cm 52 kg/m²
253/142/3 cm 78 kg/m²
253/142/4 cm 104 kg/m²

FINITURE / SURFACE FINISHING / OBERFLÄCHENBEARBEITUNG

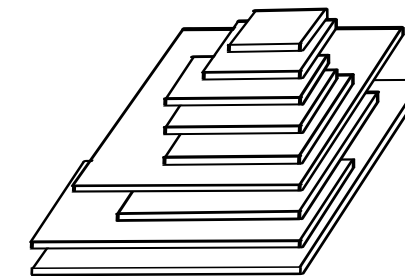


superficie impregnata antimacchia
impregnated antistain surface
diffusionsoffen fertig imprägniert

levigato / honed / feingeschliffen
levigato / honed / geschliffen
spazzolato / brushed / gebürstet
bocciardato / bush-hammered / feingestockt
lucido / polished / poliert

R9
R10
R9 / R10
R11 / R12

PAVIMENTI / TILES / BODENPLATTEN

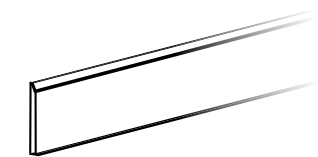


formati standard - calibrati - non bisellati
standard sizes - calibrated - not bevelled
standardformate - kalibriert - kanten gesägt

120/120/3 cm
120/60/3 cm
100/100/3 cm
80/80/3 cm
60/60/3 cm

60/40/3 cm
60/30/3 cm
40/40/3 cm
30/30/3 cm

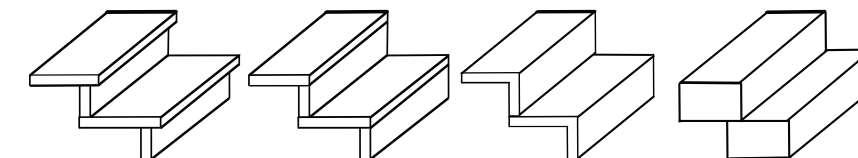
Altri formati possono essere prodotti su richiesta / Other sizes can be produce on request / Sonderformate werden nach Bestellung produziert



zoccolino skirting sockel

Standard 60/7/1 cm, costa levigata + smussata, formati speciali su richiesta
Standard 60/7/1 cm, honed + bevelled edge, special sizes on request
Standard 60/7/1 cm, Kante geschliffen + gefast, Sonderformate nach Bestellung

LAVORATI / CUT TO SIZE / FERTIGWARE



pedate treads trittstufen
alzate risers setzstufen

perfettamente incollati / perfect bonded / perfekt verklebt "System Agglotech"

davanzali window sills fenterbänke
facciate claddings fassadenplatten

FACCIAE VENTILATE (tecnologia Fischer)
VENTILATED FAÇADES (Fischer technology)
HINTERLÜFTETE FASSADEN (Fischer-Technologie)



Il Terrazzo AGGLOTECH è particolarmente adatto al rivestimento degli edifici con la tecnica delle facciate ventilate in quanto, oltre a tutti i vantaggi offerti dalla tecnologia di montaggio, garantisce:

- omogeneità cromatica sulle grandi superfici
- resistenza nei punti di ancoraggio
- consegne rapide
- resistenza ai raggi UV

AGGLOTECH terrazzo is particularly suited to use on the outside of buildings as rear-ventilated rainscreens. In addition to the benefits intrinsic to this technique, the use of terrazzo gives you:

- consistency of color over large surfaces
- strength at the anchor points
- fast delivery
- UV resistance

AGGLOTECH-Terrazzo eignet sich besonders für die Verkleidung von Gebäuden mit hinterlüfteten Fassaden, da dieses Colour außer allen von der Montagetechnik gebotenen Vorteilen Folgendes garantiert:

- farbliche Einheitlichkeit großer Flächen
- Stabilität an den Befestigungsstellen
- schnelle Lieferung
- UV-Beständigkeit



SCOPRI LA NUOVA COLLA
DISCOVER THE NEW ADHESIVE
ENTDECKEN SIE DEN NEUEN KLEBER

L'unica sul mercato pensata appositamente per il **Terrazzo**
The only one on the market specially designed for Terrazzo
 Der einzige am Markt, der exklusiv auf die Eigenschaften von **Terrazzo** abgestimmt wurde

Notevoli **qualità elastiche** e facilità di posa
Extremely deformable and easy to use
 Bemerkenswerten **elastischen Eigenschaften** und einfache Installation

Lungo tempo aperto (più di 30 minuti) e **ampi tempi di registrazione**
Long open time (more than 30 minutes) and **high adjustment times**
Lange Offen- (über 30 Minuten) und **Korrigierzeiten**

Ottima lavorabilità anche in condizioni particolarmente critiche
Excellent workability even under particularly critical conditions
 Gute Verarbeitbarkeit auch unter schwierigen Bedingungen

Marcatura CE (EN 12004)
CE marking (EN 12004)
CE-Kennzeichen (EN 12004)

Tecnicamente, AGGLOFIX S2 è un adesivo in polvere di colore bianco a base di cementi ad alta resistenza meccanica, fortemente additivato con resine sintetiche elasticizzanti e additivi speciali che lo rendono altamente deformabile (S2) se sollecitato meccanicamente.

AGGLOFIX S2 is a white powder adhesive, based on high mechanical strength cement and including large amounts of elasticizing synthetic resins and special additives, making it highly deformable (S2) under mechanical stress.

Technisch gesehen ist AGGLOFIX S2 ein weißer zementhaltiger Pulverkleber mit hoher mechanischer Festigkeit. Der hohe Anteil an Kunstharzen und die speziellen Zusatzstoffe sorgen für Elastizität und hohe Verformbarkeit (S2) bei mechanischer Belastung.

AGGLOFIX^{S2}
 by **AGGLOTECH**



CERTIFICAZIONI CERTIFICATIONS ZERTIFIZIERUNGEN



Agglotech® è membro del Green Building Council Italia
Agglotech® is a member of the Green Building Council Italy
Agglotech® ist Mitglied der GCB Italia

TERRAZZO DA BLOCCO SECONDO EN 13478 - TESTATO E CERTIFICATO DA LGA
BLOCK-TERRAZZO ACCORDING TO EN 13478 - TESTED AND CERTIFIED BY LGA
BLOCKTERRAZZO NACH EN 13748 - GEPRÜFT UND ZERTIFIZIERT VON DER LGA

Il Terrazzo di AGGLOTECH è un materiale da costruzione di qualità, resistente e adatto a superfici soggette ad alte sollecitazioni e usura. È un prodotto che ha salde radici nella tradizione, ma ha subito un'enorme evoluzione tecnica e tecnologica, riuscendo oggi a garantire caratteristiche inimitabili anche per chi ha rigorose necessità progettuali. I nostri certificati tecnici presentano eccellenti valori che superano largamente i requisiti della norma EN 13748. Il ciclo produttivo e i materiali sono costantemente controllati dal laboratorio TÜV LGA di Norimberga.

Il marchio CE su tutti i prodotti di AGGLOTECH certifica la loro conformità alle disposizioni comunitarie previste. In particolare, indica che il prodotto è stato soggetto a valutazione specifica prima dell'immissione sul mercato e che risponde ai requisiti dell'Unione Europea in materia di sicurezza, salute e protezione ambientale.

Gli standard LEED® (Leadership in Energy and Environmental Design) sono parametri per l'edilizia sostenibile, sviluppati negli Stati Uniti e applicati in 40 Paesi del mondo. Elaborati dallo US Green Building Council con la collaborazione di imprese e di ricercatori delle università statunitensi e canadesi, indicano i requisiti per costruire edifici eco-compatibili, capaci di "funzionare" in maniera sostenibile e autosufficiente a livello energetico; in sintesi, si tratta di un sistema di rating (Green Building Rating System) per il quale ogni progetto viene valutato in base al proprio peso in termini di impatto ambientale.

AGGLOTECH Terrazzo is a high quality, highly resistant construction material suitable for surfaces that are subjected to considerable wear and tear. It is a product that is firmly rooted in tradition, but has undergone considerable technical and technological development and can now guarantee unique characteristics even for those who have strict design requirements. Our technical certificates have excellent values that widely exceed EN 13748 requirements. The production cycle and materials are constantly checked by the TÜV LGA laboratory in Nuremberg.

The CE mark on all AGGLOTECH products certifies that they comply with the EU standards in force. It also indicates that the product has been specifically assessed before going onto the market and meets EU safety, health and environmental protection requirements.

The LEED® (Leadership in Energy and Environmental Design) standards are sustainable building parameters developed in the United States and applied in 40 countries worldwide. Developed by the US Green Building Council in association with US and Canadian corporations and university researchers, they lay down the requirements for the construction of eco-compatible buildings that can "function" sustainably and are energy self-sufficient. LEED is essentially a rating system (Green Building Rating System) that is used to evaluate a project according to its environmental impact.

Agglotech Blockterrazzo ist ein natürliches und beständiges Baumaterial von hoher Qualität und für den Einsatz auch in stark frequentierten Bereichen bestens geeignet. Dieses tief in der Tradition verwurzelte Produkt hat eine enorme technische und technologische Entwicklung hinter sich und ist heutzutage in der Lage, auch bei strengen Projektauflagen besondere Akzente zu setzen. Die Daten unserer Prüfberichte bestätigen, dass die technischen Eigenschaften unserer Produkte die Anforderungen der Norm EN 13748 weit übertreffen. Der Produktionsablauf und alle Werkstoffe werden laufend vom TÜV LGA Nürnberg überprüft.

Die CE-Kennzeichnung der Produkte von AGGLOTECH zertifiziert deren Übereinstimmung mit den einschlägigen Gemeinschaftsbestimmungen. Insbesondere bestätigt diese Kennzeichnung, dass das Produkt vor seinem Inverkehrbringen eingehend geprüft wurde, und den Voraussetzungen der Europäischen Union bezüglich Sicherheit, Gesundheit und Umweltschutz entspricht.

Der LEED®-Standard (Leadership in Energy and Environmental Design) enthält eine Reihe von Maßstäben für eine nachhaltige Bauweise, die in den Vereinigten Staaten entwickelt wurden und in 40 Ländern der Welt zur Anwendung kommen. Diese Parameter wurden vom US Green Building Council in Zusammenarbeit mit kanadischen und amerikanischen Unternehmen und Hochschulforschern entwickelt und erläutern die Voraussetzungen für den Bau von umweltfreundlichen Gebäuden, die auf nachhaltige und von der Energiezufuhr unabhängige Weise „funktionieren“ müssen. Zusammenfassend handelt es sich um ein Rating-System (Green Building Rating System), nach dem jedes Projekt aufgrund seiner Auswirkung auf die Umwelt bewertet wird.

AGGLOTECH SPA

Via Monte Santa Viola, 16 - I - 37142 Verona
Tel. +39 045 551777 - Fax +39 045 8701123
info@agglotech.com

Vertriebsbüro Deutschland

AGGLOTECH DEUTSCHLAND GMBH

Eich 2 - D - 73479 Ellwangen
Tel. +49 7961 568391 - Fax +49 7961 568392
info@agglotech.de - www.agglotech.de



Dati tecnici, caratteristiche e colori presenti nel catalogo non sono impegnativi. I materiali possono subire variazioni e miglioramenti in sede di esecuzione senza preavviso.
Die in diesem Katalog enthaltenen technischen Daten, Merkmale und Farben sind unverbindlich. Alle Materialien können bei der Ausführung ohne Vorankündigung Änderungen und Verbesserungen unterliegen.
Technical specifications, colors and other characteristics shown in the catalog are not binding. Materials may be subject to improvements and other production variations without prior notification.

www.agglotech.com

FOLLOW US

